

## AEF-01



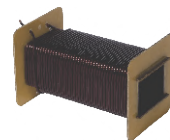
### FEATURES:

- Speed variable with speed control knob.
- Jog facility with foot switch at fixed low speed.
- Menu driven programming along with 40x2LCD display with 99 program storage for quick winding setup with add, modify, copy, list, run, delete facility.
- Wide variety of programmable parameters with on-line modification.
- A.C. vector drive and gearbox for high and constant torque.
- Pneumatic pressure system to achieve dimensions of coil within low tolerance.
- Flash memory makes possibility to upgrade or modify software.
- Ball screw and guide way mechanism for better performance.
- Pulleys with adjustable width for strip winding.
- Possibility to customise the software along with interfacing of various attachments to achieve customised winding solution.
- Wire guide, faceplate and tail stock are standard accessories included in the machine.

### OPTIONAL ACCESSORIES:

- Tensioner cum Spool holder for strip and wires upto 150lbs.
- Paper roller holder for interlayer insulation
- Four pulley wire guide for average wire size

\*For improving performance, ACME Mechatronics, Inc. reserves the right to make changes in specifications and machines without prior notice.



Production Capability	AEF-01	Technical Specification	AEH-11
Wire Size upto(in / AWG) Strip Size upto(in)	0.2 / 4 0.6x0.12	Spindle Motor	3HP AC
Winding Width(in)	18	Traverse Motor	400 Servo Motor
Bobbin Diameter(in)	20	Controller	16 bit micro controller
Speed in RPM(max.)	100	Supply Voltage	220 ± 5% Vac, 3Ph., 60 Hz.
Dimension(WxDxH in)	60x25x45	Power Consumption	2500W